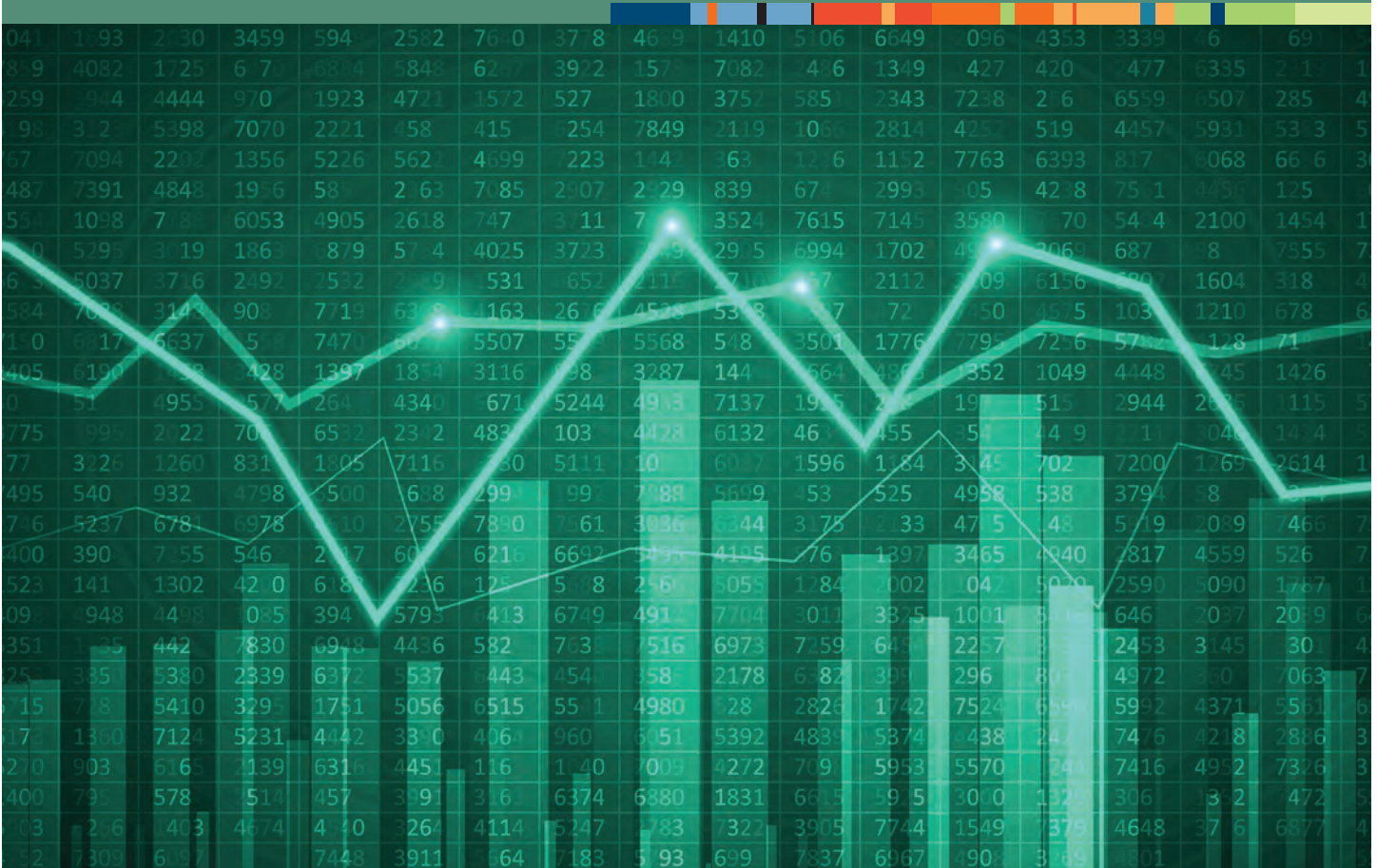


SPRING 2021 / END OF TERM ENROLLMENT REPORT



Rishi Raj Poudyal/Carmella Sanchez
 (505) 747-2117 / (505) 747-2118
rishi.poudyal@nmmc.edu / carmella@nmmc.edu

Office of Institutional Research
 NORTHERN NEW MEXICO COLLEGE



INTRODUCTION

The Northern New Mexico College Enrollment Report is an analysis of the end of the term data. This document is compiled by the Office of Institutional Research in order to inform Academic Department Chairs, primarily, regarding the current semester student enrollment and course loads. It is intended for both planning and strategic decision making. This report is prepared at census date (3rd Friday), and focuses on first 8-week, and 16-week enrollment. This end of term enrollment report is prepared at the end of the semester in order to capture second 8-week information. Table 2 and tables 9-16 which contain student's credit hour statistics have been updated to include first 8-week, second 8-week, and 16-week course information. The tables (indicated with an *) with student's headcount information are not updated and contain the same information as reported at semester census date (3rd Friday).

The data in this publication is compiled using the most recent enrollment, schedules, and faculty assignments. All data is collected and maintained using Banner. The intent of this report is to provide an accurate and consistent reference for use by various internal and external stakeholders as well. This effort intends to not only provide quick and easy access to institutional data but also to open-up new ideas and questions. If you have questions or comments regarding this report, please feel free to contact us by email at rishi.poudyal@nnmc.edu.

***Unduplicated Declared Majors per Academic Department**

Analysis of FTE					
Academic Departments	FTE (Spring2021)	Head Counts (Spring 2021)	Head Counts (Fall 2020)	% of Declared Students (Spring 2021)	% I&G Academic Affairs Budget (\$5.1approx.)
Arts, Film and Media	10.0	12	14	1%	6.5%
Biology, Chemistry, and ES	102.8	116	129	11%	11.6%
Business Administration	156.0	181	185	17%	13.3%
Education	67.5	85	94	8%	9.5%
Engineering and Tech	67.1	76	80	7%	13.6%
HPER	0	0	0	0%	0.4%
Humanities and Social Science	84.5	97	118	9%	10.7%
Language & Letters	22.2	23	35	2%	8.7%
Mathematics/Physics	2.8	3	4	0%	7.9%
Nursing and HS	87.0	105	123	10%	17.7%
Technical Trade	1.6	2	0	0%	*
Undeclared	42.6	137	175	13%	NA
Undeclared Dual Credit	92.8	219	297	21%	NA
Total	736.9	1056	1254	100%	100%

Table 1: Unduplicated data consider only the primary major/degree that students have declared. (* This program is not funded by I & G)

Student Credit Hours (SCH) generated per Academic Department (Now including 2nd 8-week courses)

Analysis Variable: SCH			
Academic Departments	SCH	%SCH	% I&G Academic Affairs Budget (\$5.1M approx.)
Arts, Film and Media	777	8%	6.5%
Biology, Chemistry, and ES	1305	13%	11.6%
Business Administration	1922	19%	13.3%
Education	721	7%	9.5%
Engineering and Tech	700	7%	13.6%
HPER	21	0%	0.4%
Humanities and Social Science	1412	14%	10.7%
Language & Letters	1302	13%	8.7%
Mathematics/Physics	1120	11%	7.9%
Nursing and HS	559.5	5%	17.7%
Technical Trade	374	4%	*
Total	10213.5	100%	100%

Table 2: Here only unique CRN values were considered. (* This program is not funded by I & G)

***Types of Degrees (based on duplicated enrollment)**

Degree	Number	Percentage
Associate	228	21.59
Bachelor	439	41.57
Certificate	33	3.13
Undeclared	356	33.71

Table 3

***Gender Distribution (based on unduplicated enrollment)**

Table of Academic Department by Gender			
Academic Departments	Gender		
	F	M	Total
Arts, Film and Media	4	8	12
Biology, Chemistry, and ES	66	50	116
Business Administration	125	56	181
Education	77	8	85
Engineering and Tech	25	51	76
HPER	0	0	0
Humanities and Social Science	69	28	97
Language & Letters	12	11	23
Mathematics/Physics	0	3	3
Nursing and HS	96	9	105
Technical Trade	0	2	2
Undeclared	161	195	356
Total	635	421	1056
Percentage	60%	40%	100%

Table 4

*** Financial Aid & First-Generation Statistics:**

First generation college student is defined as being the first person in the immediate family to attend college—i.e.: *neither parent has a college degree*. Prior enrollment reports defined 1st generation as *one parent or less* having a college degree.

Pell Eligible
37% of total headcount
46.8% without dual credit students

Table 5

First Generation
31.18%

Table 6

*** Ethnic Distribution (based on unduplicated enrollment)**

Ethnicity	Number	Percentage
American Indian or Alaskan Nat	101	9.56
Asian	16	1.52

Ethnicity	Number	Percentage
Black or African American	23	2.18
Hispanic of any race	772	73.11
Native Hawaiian/Pacific Island	3	0.28
White Non-Hispanic	125	11.84
Non-Resident Alien	7	0.66
Unknown / No Response	9	0.85
Total	1056	100%

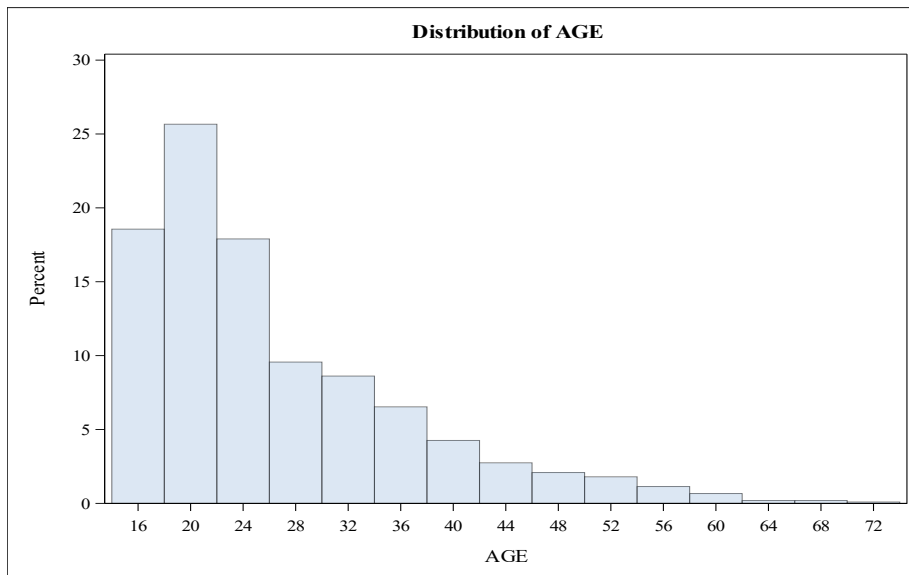
Table 7

***Age Statistics and Distribution (Unduplicated enrollment)**

Analysis Variable: AGE			
Minimum	Mean	Median	Maximum
14	25.9	22	73

Table 8

*** Distribution of Student’s Age**



Graph 1: Histogram of age distribution of unduplicated enrolled students

Courses offered per Academic Department (Now including 2nd 8-week courses)

Academic Departments	# Courses offered	Percent
Arts, Film and Media	22	7.17
Biology, Chemistry, and ES	47	15.13
Business Administration	38	12.38
Education	19	6.19
Engineering and Tech	32	10.42

Academic Departments	# Courses offered	Percent
HPER	5	1.63
Humanities and Social Science	40	13.03
Language & Letters	35	11.40
Mathematics/Physics	28	9.12
Nursing and HS	28	9.12
Technical Trade	13	4.23
Total	307	100%

Table 9

Courses per Academic Department (Now including 2nd 8-week courses) by Division

Table of Academic Departments by Division			
Academic Departments	Division		
	Lower	Upper	Total
Arts, Film and Media	21	1	22
Biology, Chemistry, and ES	34	13	47
Business Administration	23	15	38
Education	7	12	19
Engineering and Tech	14	18	32
HPER	5	0	5
Humanities and Social Science	21	19	40
Language & Letters	33	2	35
Mathematics/Physics	28	0	28
Nursing and HS	22	6	28
Technical Trade	13	0	13
Total	221	86	307
Percentage	72%	28%	100%

Table 10

Low Enrolled Courses per Academic Department (Now including 2nd 8-week courses)

Analysis Variable: Enrollment		
Academic Departments	Low Enrolled Courses (n<10)	Percent Low Enrolled Courses (n<10)
Arts, Film and Media	12	55%
Biology, Chemistry, and ES	19	40%
Business Administration	12	32%
Education	6	32%
Engineering and Tech	21	66%
HPER	5	100%
Humanities and Social Science	17	43%
Language & Letters	9	26%
Mathematics/Physics	8	29%

Academic Departments	Low Enrolled Courses (n<10)	Percent Low Enrolled Courses (n<10)
Nursing and HS	13	46%
Technical Trade	9	69%
Total	133	43%

Table 11: Percentages in this table are based on total numbers per Academic Department (**Note: Clinical Sessions and Capstone have a cap of 8 students**). Here, Unique CRN values were considered. (ECED 4479, 4480 and EDUC 4479 ,4480 have cap 6-

Average Student Enrollment per Course (Now including 2nd 8-week courses)

Academic Departments	Average Number of Students Lower Division	Average Number of Students Upper Division
Arts, Film, and Media	10.8	4.0
Biology, Chemistry, ES	13.9	6.7
Business Administration	14.4	16.3
Education	9	12.8
Engineering and Tech	12.1	4.4
HPER	4.2	0
Humanities and Social Science	15.4	8.8
Language & Letters	12.5	4.5
Mathematics/Physics	12.9	0
Nursing and HS	12.0	6.5
Technical Trade	9.8	0
Total	12.5	9.1
General Average	11.6	

Table 12

Courses: Method of Instruction/Delivery (Now including 2nd 8-week courses)

Table of Academic Departments by Instruction Methods			
Academic Departments	Instruction Methods		
	TR	WEB	Total
Arts, Film and Media	19	3	22
Biology, Chemistry, and ES	43	4	47
Business Administration	19	19	38
Education	9	10	19
Engineering and Tech	32	0	32
HPER	5	0	5
Humanities and Social Science	28	12	40
Language & Letters	30	5	35
Mathematics/Physics	26	2	28

Academic Departments	TR	WEB	Total
Nursing and HS	19	9	28
Technical Trade	13	0	13
Total	243	64	307
Percentage	79%	21%	100%

Table 13: TR means face-to-face/traditional, WEB means full online delivery. This table measures CRNS and does not consider the combined in AFM.

Courses: Method of Instruction/Delivery vs Type of Faculty (Now including 2nd 8-week courses)

Table of Faculty Types by Instruction Methods			
Faculty Types	Instruction Methods		
	TR	WEB	Total
Adjunct	103	32	135
Full time	140	32	172
Total	243	64	307

Table 14: TR means face-to-face/traditional, WEB means full online delivery. This table measures CRNS and does not consider the combined in AFM. If we consider unique faculties, 44 are full time and 71 are adjunct.

Average Student Enrollment per Course by Method of Delivery (Now including 2nd 8-week courses)

Table of average enrollment per Instruction Method	
Instruction Methods	Mean
TR	10.4
WEB	16.0

Table 15

Courses & Student Credit Hours (SCH): Adjunct vs Full Time (Now including 2nd 8-week courses)

Academic Department	#Course by Adjunct	#Courses by Full Time	SCH offered by Adjunct	SCH offered by Full Time
Arts, Film, and Media	12	10	586	191
Biology, Chemistry, ES	13	34	480	825
Business Administration	16	22	732	1190
Education	8	11	276	445
Engineering and Tech	9	23	293	410
HPER	5	0	21	0

Academic Department	#Course by Adjunct	#Courses by Full Time	SCH offered by Adjunct	SCH offered by Full Time
Humanities and Social Science	20	20	905	623
Language and Letters	28	7	1095	207
Mathematics/Physics	6	22	277	843
Nursing and HS	13	15	363.5	494
Technical Trade	5	8	336	50
Total	135	172	5364.5	5278
Percentage (%)	44%	56%	50.4%	49.6%

Table 16

***Unduplicated Declared Majors by Field and Degree**

Table of Major by Degree				
Majors	Degree			
	Associate	Bachelor	Certificate	Total
ALT Special Education	0	0	6	6
ALT-Elementary(K-8)	0	0	9	9
Accounting	0	11	0	11
Allied Health	6	0	0	6
Alt Secondary (7-12)	0	0	4	4
Barbering	8	0	3	11
Biology	7	31	0	38
Bookkeeper	0	0	1	1
Business Administration	18	94	0	112
Chemistry	2	0	0	2
Cosmetology	13	0	1	14
Criminal Justice	6	19	0	25
Early Childhood Education	6	30	0	36
Electrical Technology	1	0	1	2
Electromechanical Engr Tech	0	17	0	17
Elementary Education	2	28	0	30
Environmental Science	9	27	0	36
Film and Digital Media Arts	12	0	0	12
General Psychology	3	0	0	3
Humanities	0	1	0	1
Information Engineering Tech	10	41	0	51
Liberal Arts	23	0	0	23
Mathematics	0	3	0	3
Mechanical Engineering	0	3	0	3
Microsoft Office Suite	0	0	3	3
Nursing (ADN)	48	0	0	48
Office Administration	9	0	0	9
Pre-Engineering	3	0	0	3

Majors	Associate	Bachelor	Certificate	Total
Project Management	0	20	0	20
Psychology	0	51	0	51
Pueblo Indian Studies	1	0	0	1
RN to BSN	0	51	0	51
Radiation Control Technician	0	0	5	5
Radiation Protection	35	0	0	35
Self-Design	0	12	0	12
Software Engineering	2	0	0	2
Substance Abuse Counselor	4	0	0	4
Non-Degree Seeker	0	356	0	356
Total	228	795	33	1056

Table 17

***Unduplicated Majors declared by Gender**

Table of Major by Gender			
Majors	Gender		
	F	M	Total
ALT Special Education	3	3	6
ALT-Elementary(K-8)	8	1	9
Accounting	8	3	11
Allied Health	6	0	6
Alt Secondary (7-12)	4	0	4
Barbering	3	8	11
Biology	28	10	38
Bookkeeper	1	0	1
Business Administration	77	35	112
Chemistry	2	0	2
Cosmetology	13	1	14
Criminal Justice	12	13	25
Early Childhood Education	36	0	36
Electrical Technology	0	2	2
Electromechanical Engr Tech	5	12	17
Elementary Education	26	4	30
Environmental Science	20	16	36
Film and Digital Media Arts	4	8	12
General Psychology	3	0	3
Humanities	1	0	1
Information Engineering Tech	19	32	51
Liberal Arts	12	11	23
Mathematics	0	3	3
Mechanical Engineering	0	3	3
Microsoft Office Suite	3	0	3
Non-Degree	161	195	356
Nursing (ADN)	41	7	48

Majors	F	M	Total
Office Administration	8	1	9
Pre-Engineering	1	2	3
Project Management	12	8	20
Psychology	43	8	51
Pueblo Indian Studies	0	1	1
RN to BSN	49	2	51
Radiation Control Technician	3	2	5
Radiation Protection	13	22	35
Self-Design	6	6	12
Software Engineering	0	2	2
Substance Abuse Counselor	4	0	4
Total	635	421	1056

Table 18

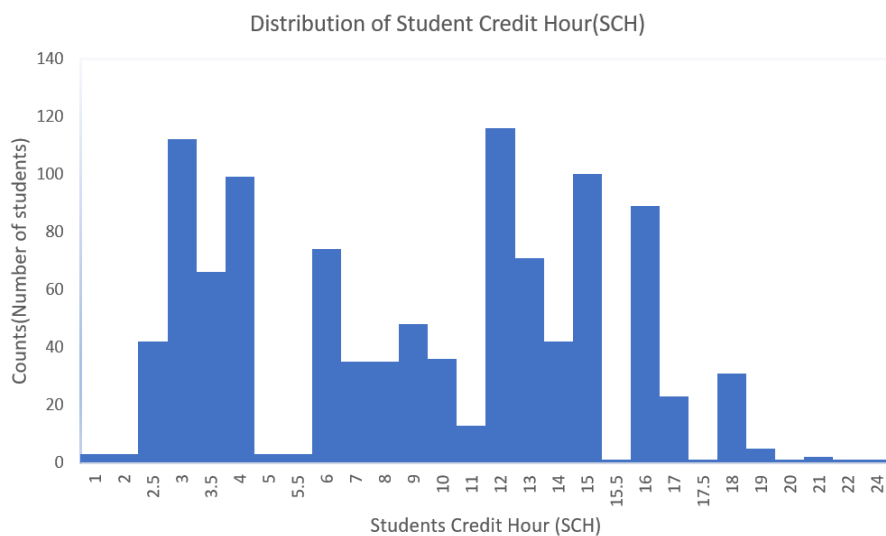
***Unduplicated Declared Majors by Ethnicity**

Table of Major by Ethnicity									
Majors	American Indian or Alaskan Nat	Asian	Black or African American	Hispanic of any race	Native Hawaiian /Pacific Island	Non-Resident Alien	Unknown / No Response	White non-Hispanic	Total
ALT Special Education	0	2	0	3	0	1	0	0	6
ALT-Elementary(K-8)	1	0	0	6	0	0	0	2	9
Accounting	3	0	1	7	0	0	0	0	11
Allied Health	0	0	0	6	0	0	0	0	6
Alt Secondary (7-12)	0	0	0	3	0	0	0	1	4
Barbering	0	0	0	10	0	0	0	1	11
Biology	1	0	3	28	0	0	0	6	38
Bookkeeper	0	0	0	0	0	0	0	1	1
Business Administration	14	2	3	82	0	5	1	5	112
Chemistry	0	0	0	2	0	0	0	0	2
Cosmetology	0	0	0	14	0	0	0	0	14
Criminal Justice	5	0	1	19	0	0	0	0	25
Early Childhood Education	12	1	1	21	0	0	0	1	36
Electrical Technology	0	0	0	2	0	0	0	0	2
Electromechanical Engr Tech	2	0	0	8	0	0	1	6	17
Elementary Education	3	1	1	18	0	0	0	7	30
Environmental Science	3	0	0	27	0	0	0	6	36
Film and Digital Media Arts	2	0	0	8	0	0	0	2	12
General Psychology	2	0	0	1	0	0	0	0	3
Humanities	0	0	0	1	0	0	0	0	1
Information Engineering Tech	5	4	1	36	0	1	1	3	51
Liberal Arts	1	0	2	20	0	0	0	0	23
Mathematics	0	0	0	2	0	0	0	1	3
Mechanical Engineering	0	0	1	2	0	0	0	0	3
Microsoft Office Suite	2	0	0	1	0	0	0	0	3

Majors	American Indian or Alaskan Nat	Asian	Black or African American	Hispanic of any race	Native Hawaiian /Pacific Island	Non-Resident Alien	Unknown / No Response	White non-Hispanic	Total
Non-Degree	30	1	4	263	1	0	6	51	356
Nursing (ADN)	2	0	1	36	1	0	0	8	48
Office Administration	0	0	0	9	0	0	0	0	9
Pre-Engineering	0	1	0	2	0	0	0	0	3
Project Management	1	0	0	15	0	0	0	4	20
Psychology	6	1	2	37	1	0	0	4	51
Pueblo Indian Studies	1	0	0	0	0	0	0	0	1
RN to BSN	1	1	1	40	0	0	0	8	51
Radiation Control Technician	0	1	0	3	0	0	0	1	5
Radiation Protection	1	1	1	25	0	0	0	7	35
Self-Design	2	0	0	10	0	0	0	0	12
Software Engineering	0	0	0	2	0	0	0	0	2
Substance Abuse Counselor	1	0	0	3	0	0	0	0	4
Total	101	16	23	772	3	7	9	125	1056

Table 19

***Distribution of total SCHs enrolled by each student**



Graph 2: Histogram of the Student Credit Hours per student (the vertical axis is the number of students). Students who take between 12 and 18 credits are only charged tuition for the first 12 credits. Because of this distribution and the attendance of dual credit students, only 88% of the SCHs generated are eligible for tuition. Employee tuition waivers decrease this number even further.

***Enrollment by Location**

City	Frequency	Percent
Espanola	275	26.04
Santa Fe	104	9.85
Santa Cruz	81	7.67
Albuquerque	67	6.34
Alcalde	52	4.92
Ohkay Owingeh	43	4.07
Chimayo	37	3.50
Fairview	36	3.41
Los Alamos	27	2.56
Velarde	27	2.56
Hernandez	20	1.89
Rio Rancho	20	1.89
White Rock	18	1.70
Abiquiu	17	1.61
Chamisal	13	1.23
El Rito	11	1.04
Gallina	11	1.04
Penasco	11	1.04

Table 20: Here only location with 1% and more contribution were considered.

***Enrollment by High School (First-Time Any College)**

High School	Percent
GED New Mexico	33.33
Pojoaque High	12.50
Espanola Valley High	8.33
Los Alamos High	8.33
Capital High School	4.17
Escalante High	4.17
Maine	4.17
McCurdy High	4.17
Pennsylvania	4.17
Santa Fe High	4.17
Taos High School	4.17
V Sue Cleveland High School	4.17
West Mesa High	4.17

Table 21: This table shows enrollment by high school with first time any college